



Building Blocks

Fall 2010



A computer rendering of the new entry lobby at St. Francis Memorial Hospital. Right: A look at the future the new entry canopy at St. Francis Memorial Hospital.



Construction Underway St. Francis Memorial Hospital Addition

Beckenhauer Construction is excited to begin construction on the new addition and renovation at St. Francis Memorial Hospital in West Point, Neb. When local contractor MS Construction and hospital CEO Ron

Briggs asked us to help with construction of this \$17 million project, we were elated to have the opportunity.

When completed, the project will create a new entry canopy, healing garden and three-level patient addition. The partial lower level will house the mechanical and electrical equipment. The first level will include a new entry lobby and rehabilitation area, along with remodeling work on the clinic. On the second level, a new cafeteria and conference space will be added, and the third level will include 17 new patient rooms with support space, plus the existing patient room wing will be transformed into seven new patient rooms with nursery. Project completion is anticipated in March 2012.



At left: Steel going up for St. Francis Memorial Hospital's new addition.



DESIGN/BUILD SPECIALISTS

P.O. Box 866 | Norfolk, Nebraska 68702-0866 | TEL: (402) 371-5363 | FAX: (402) 371-1129
EMAIL: office@BeckenhauerConstruction.com | www.BeckenhauerConstruction.com

We're doing our part. This newsletter is printed on environmentally-friendly paper—50% recycled, using 25% post-consumer waste, and is composed of a mixture of fibers from certified forests, post-consumer recycling processes and fibers from other controlled sources.



BCI
BECKENHAUER
CONSTRUCTION, INC.

DESIGN/BUILD SPECIALISTS • ESTABLISHED 1878
P.O. Box 866
Norfolk, NE 68702-0866

www.BeckenhauerConstruction.com

AFFILIATED WITH:

Associated General Contractors of America (AGC)
Sullivan Group
Medcon Alliance Group, LLC
Jack Miller Network

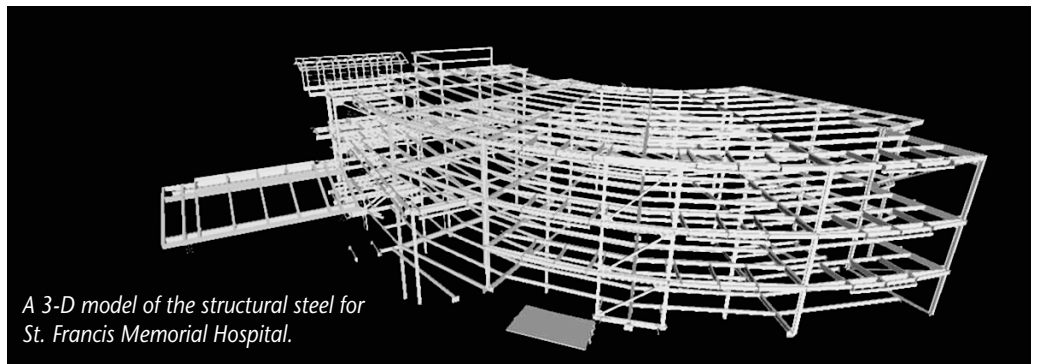


BEHLEN
Fall 2010

And You Don't Even Need Special Glasses!

Beckenhauer Construction has gone 3-D! To provide better service to our clients, we have implemented the use of Building Information Modeling (BIM) on our projects. BIM is the process of generating and managing building data using three-dimensional building modeling software.

Using 3-D drawings from the architect or 3-D shop drawings from subcontractors, we are able to view the designs three-dimensionally to spot potential issues before construction is even started. The BIM software uses a "clash detection" program that overlays drawings from each trade and shows possible issues while they are still easily fixed. BIM also offers the ability to record animated walk-throughs, 4-D scheduling, trade coordination, photo-realistic visualization, object animation and real-time navigation.



A 3-D model of the structural steel for St. Francis Memorial Hospital.

Going Green

Beckenhauer Construction now has a LEED® Green Associate on staff. Call or visit us today for all your green building needs.



Did You Know?...

The built environment has a profound impact on our natural environment, economy, health, and productivity. According to the U.S. Green Building Council (USGBC), in the United States alone, buildings account for:

- 72% of electricity consumption,
- 39% of energy use,
- 38% of all carbon dioxide (CO₂) emissions,
- 40% of raw materials use,
- 30% of waste output (136 million tons annually), and
- 14% of potable water consumption.

Our Mission... To provide unparalleled service to our clients, to verify fulfillment of our duties and obligations through quality assurance. To strive for superior performance, absolute reliability and to be recognized for our unwavering commitment to honesty and integrity.