

## JENNIE M. MELHAM MEMORIAL MEDICAL CENTER CLINIC REMODEL

The clinic remodel at the Jennie M. Melham Memorial Medical Center in Broken Bow, NE kicked off at the beginning of September 2017. Jennie M. Melham Memorial Medical Center serves several small communities around Broken



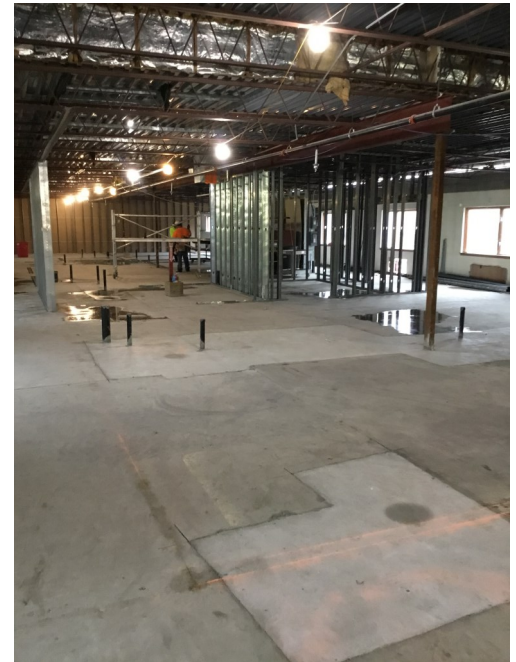
Aerial view of the medical center.



Demolition is complete.

Bow and everyone is very excited to have a new clinic. The project includes renovating 20,000 SF of an existing nursing home that is attached to the hospital and turning it into a full clinic. The clinic will include 24 exam rooms, 2 procedure rooms and an X-Ray.

The interior demolition is wrapping up and the interior framing along with mechanical, electrical, and plumbing rough-ins has begun. The exterior façade will be getting a facelift as well, with accent brick, a new roof, new metal panel fascia, and soffit. This project is expected to be complete in Spring 2018.



Interior framing and mechanical, electrical & plumbing rough-ins started.

We are very fortunate to have Jennie M. Melham Memorial Medical Center as a repeat client and have worked with them on many successful projects over the past 10 years. We look forward to working with a great client again and help them bring a new clinic to a great community.



## CHERRY COUNTY HOSPITAL

Cherry County Hospital has been under construction for roughly 8 months and has been moving steady and is ahead of schedule. To date we have poured over 280 cubic yards of

concrete on the interior flatwork portions of the building and over 1,725 cubic yards of parking lot and paving. Interior drywall work, painting, and finishes will be starting soon.



Exterior finishes in progress.



Aerial view of the medical center.

Cherry County Hospital will be able to take occupancy of the two new additions, a surgery suite and patient wing around spring of 2018. The brand new 9,900 SF surgery suite contains two large

Operating Rooms, one procedure room, recovery area, and central

sterile. The new OR rooms will be a spacious 500+ SF room with 5 new medical booms. The new patient wing addition will consist of roughly 9,000+ SF of space containing 10 new patient rooms, 2 LDR's, and Nursery. The patient rooms will be a large 370 SF each with a private bathroom and shower.

We are happy here at Beckenhauer Construction to be involved with improving the facility and providing the community with a high-quality product.



Interior framing in progress.

**Our Mission...** To provide unparalleled service to our clients and to strive for superior performance and absolute reliability.

**Our Vision...** To focus our unwavering dedication to the task of turning our client's vision into a reality.

**Our Value...** To hold to the standards of safety, quality, reliability, integrity, honesty, and a caring Christian work environment.



## LEAN CONSTRUCTION AND THE 5 S'S

When people think of Lean construction, they frequently think about just the scheduling aspects. As part of our "Lean Journey" we have implemented pull planning and utilize the Last Planner System® to improve collaboration, improve reliability of schedule delivery and reduce waste or improve value on projects. But we are using other tools as well, one of which is the 5 S's and we are working hard to reinforce and sustain (the fifth S) them.

The 5 S's include **S**orting, **S**implifying, **S**weeping, **S**tandardizing, and **S**ustaining. Some examples;

- Sort – sort out unneeded items so only items needed are onsite. (avoid getting material too early that clutters the jobsite and slows everyone's progress, and when an activity is complete get rid of any excess material for the same reason)
- Simplify – could include having clearly marked storage areas for tools so workers can find what they need without wasting time to find it. It can also be as easy as keeping tool boxes closer to where the work will be performed.
- Sweeping – keeping the jobsite clean keeps everyone more productive, having the tools clean so they operate efficiently avoids down time, when everything is cleaned up it is easier to find things and keep them sorted.



Above: Before 5 S  
Below: After 5 S



Above: Before 5 S  
Below: After 5 S





Above: Before 5 S  
Below: After 5 S



- **Standardize** – If every material delivery is planned out so everyone knows where it is going when it comes to the project and an area is marked out for where it goes, it will help avoid someone having to move it again because it's in the way of another trade. Strive to discuss every material delivery at pull planning sessions and even spray paint on the floor the area for the material to be delivered.



Above: Before 5 S  
Below: After 5 S

- **Sustain** – To keep from going back to the way it was before, keep a focus up with signage on site or in the warehouse, share best practices among team members and keep a focus on the 5 S's in the office as well as on site.



The cumulative effect of the 5 S's on a project can help make everyone more productive and safe which increases value delivered in less time for every stakeholder involved.



# BUMPER STICKER HUMOR

Do not argue with an idiot. He will drag you down to his level and beat you with experience.

Going to church doesn't make you a Christian any more than standing in a garage makes you a car.

The last thing I want to do is hurt you. But it's still on the list.

Light travels faster than sound. This is why some people appear bright until you hear them speak.

Knowledge is knowing a tomato is a fruit; wisdom is not putting it in a fruit salad.

The early bird might get the worm, but the second mouse gets the cheese.

Better to remain silent and be thought a fool, than to speak and remove all doubt.

Q: Why do the French like to eat snails so much?  
A: They can't stand fast food!

Q: Why is it a bad idea to insult an octopus?  
A: Because it is well armed!

Q: What did one candle say to the other?  
A: I'll be going out tonight!

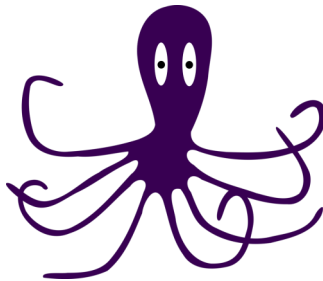
Q: How come the barber won the race?  
A: The cheater took a short cut!

Q: What did the toilet roll complain about?  
A: People just keep ripping me off!

Q: What did one wall say to the other wall?  
A: We'll meet at the corner!

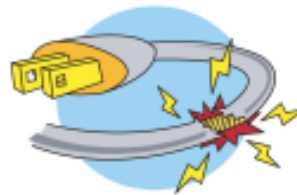
Q: What do you get when you cross a refrigerator and a guitar?  
A: Some really cool music!

Q: Why is it impossible for your nose to be 12 inches long?  
A: Because then it would become a foot!



## QUICK TIPS

You should test your garage door opener every month to ensure that it is working properly. The opening mechanism should reverse if it encounters an obstruction or when the sensor beam is interrupted. If it does not reverse when something is in the way, it is dangerous to pets and children. It could also damage items that are inadvertently left in the garage opening. If it does not reverse, it should be repaired as soon as possible. It may simply be that the sensors need to be lined up, but it is worth checking out.



When hanging lights outdoors for the holidays, be sure to check the strands beforehand, discarding any with frayed cords, cracked lamp holders, or loose connections. Keep electrical connectors off the ground and do not connect light strands to metal rain gutters. Finally, use plastic clips instead of metal nails or tacks to hold the lights in place.

If you have trouble starting to exercise when you get to the gym, just concentrate on the body part you deem most important first. Researchers have found that during a workout, fatigue can diminish the effect of later exercises. So if you have a body area that needs constant work, be sure to target this first to maximize your workout effort.



Smaller airports have less traffic and typically fewer delays. They are easier to navigate as well.

You also get the benefit of seeing sights you would not normally see as you fly in and when you drive out of the airport.



## AUTUMN TIPS FOR PET OWNERS

Pets, just like people, look forward to a break in the hot weather of summer. It is a lovely time of year for our animal friends, but there are some safety tips to keep in mind as the weather cools.



--As you gather school supplies, remember to keep them out of the reach of your pets. While items such as glue sticks and magic markers have low-toxicity, a pet can get sick if he or she ingests a large quantity of them. To be safe, store them out of your pet's reach.

-- If your pet spends time outdoors, be sure to keep a close eye on the weather forecast. In the fall, cold weather can move in quickly, even on a day that starts out warm. Make sure that your pet has adequate

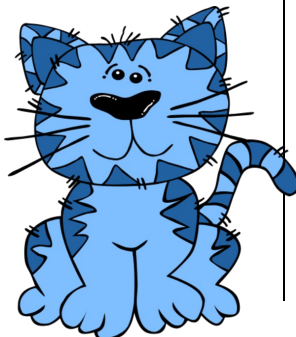
shelter and some protection from freezing rain and wind.



-- Fall is one of the best seasons for mushroom growth. When heading outdoors, be sure to keep

a close eye on your dog when he or she explores areas with lots of plants. Most mushrooms are non-toxic, but ingesting one of the dangerous varieties can have serious consequences. If you see your dog eating a wild mushroom, contact your veterinarian immediately.

-- In preparing for colder weather, many people change or add to the coolant in their vehicle. Be sure to keep antifreeze away from your pet, as it is highly toxic. Spills should be cleaned up immediately. You may also consider switching to propylene glycol-based coolants rather than using the standard ethylene glycol-based coolants. While not completely non-toxic, they are much better than the standard antifreeze.



## Trivia!

1. What is the name of Dr. Seuss's egg-hatching elephant?
2. Who was Clark Kent's high school sweetheart?
3. What novel contains the longest sentence in literature?
4. What famous book begins: "Chug, chug, chug. Puff, puff, puff"?
5. What comic strip character was named after heavyweight boxing champion James J. Jeffries?
6. The Emerald City was the working title of which classic novel?
7. What was the name of the girlfriend of Felix the Cat?
8. What was Scarlett O'Hara's real first name?
9. How many years did Robinson Crusoe spend shipwrecked on his island?
10. Where did Samuel Clemens get the idea for his pseudonym, Mark Twain?

Answers:

1. Horton
2. Lana Lang
3. Les Misérables, by Victor Hugo, with 823 words
4. The Little Engine that Could
5. Jeff, of Mutt and Jeff
6. The Wonderful Wizard of Oz
7. Phyllis
8. Kate
9. 24
10. It was the river called used by boatmen on the Mississippi to signify two fathoms of water